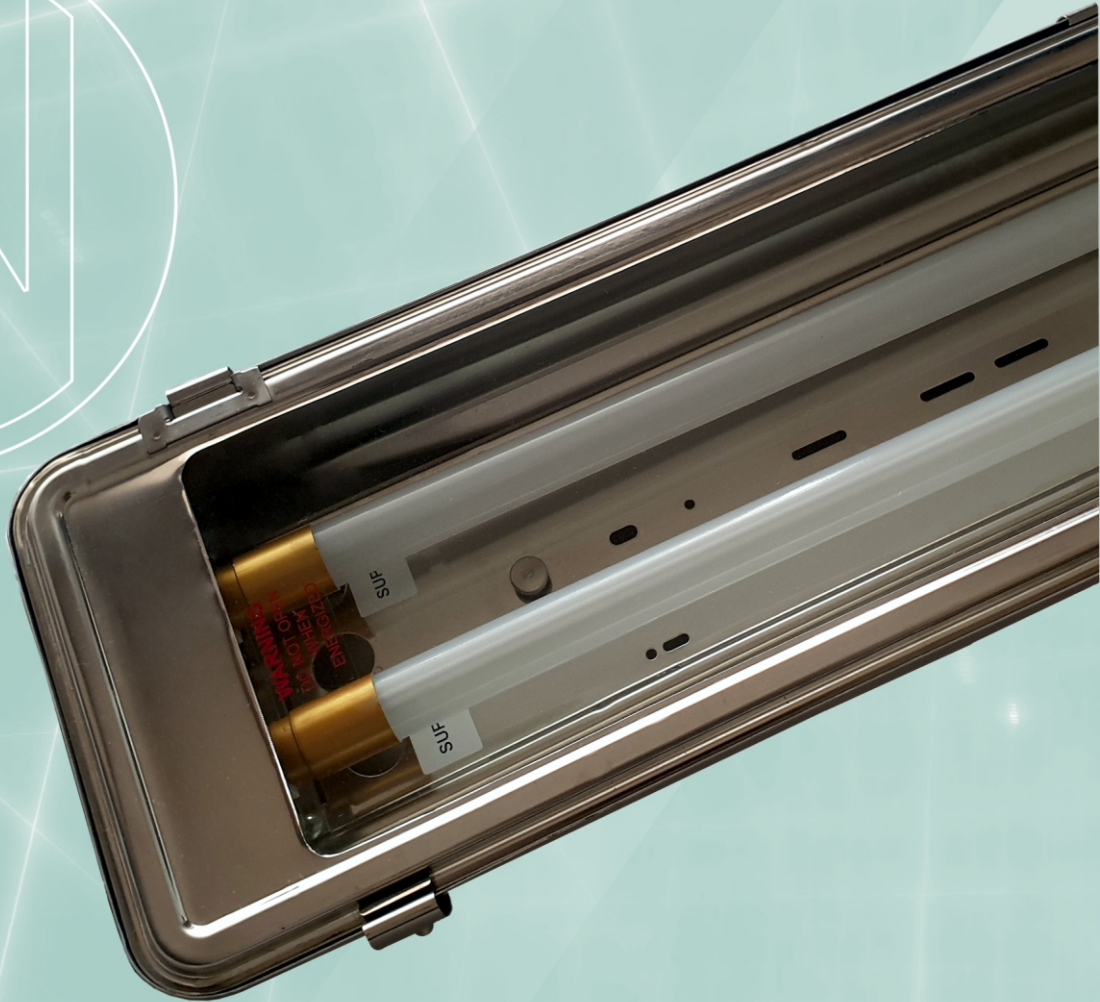


N50 - LT LED Exn

Zone 2, 21 & 22



The **N50 - LT LED Exn** linear luminaire range is a high-performance LED industrial stainless steel luminaire and is certified for use in Zone 2, 21 and 22 hazardous environments. The luminaire is designed to replace the conventional fluorescent lamps which makes it energy efficient with high performance, low maintenance and longer life span. It's suitable for wall, ceiling, bracket and pole mounting. The **N50 - LT LED Exn** continues the proud heritage of NORDLAND LIGHTING's Ex safety standards whilst utilizing the latest LED technology.



NORDLAND LIGHTING®

N50 - LT LED Exn

Applications: Zone 2, 21 & 22 Hazardous locations, and Highly corrosive areas.

Body: Manufactured from Stainless steel grade 304. Marine grade 316 available on special order. The single piece deep drawn body may not be drilled on site.

Clips: Double acting stainless steel clips with M4 socket head screws on outer clips.

Lens: 4mm thick clear tempered plate glass.

Gasket: Extruded silicone one piece gasket.

Lens Frame: Pressed from a single piece stainless steel sheet without joining welds and with extra wide ends for increased rigidity.

Frame Suspension: The lens frame is suspended on two points along one side of the body to allow the glass frame to swing open during servicing.

Control Gear: White epoxy coated gear tray carries the Ex - LED tube and lamp holders, and is also designed to act as a reflector. LED tubes complies with Ex nA standards. Two cords allow the gear tray to be suspended from the body during installation and service.

The N50-LT Exn utilizes an unique proprietary Nordland Exn LED tube, and therefore no other LED tubes will be allowed to be used. Only Nordland branded Exn LED Tubes will function in this Exn LED fitting.

Note: Lightning Protection: All electronic products such as light fittings and computers are subject to violent destruction when struck by lightning. An independent lightning protection device, well earthed, needs to be inserted in the supply line before the lighting circuit, where any electronic control gear is used in light fittings. Control gear damaged by lightning is not covered under guarantee.

Ex-mark:

Ex e nA IIC T4 Gc
Ex tb IIIC T 135°C Db

Please Note:

Wired gear trays are available separately for all the below mentioned models.

Cable Entry: Threaded 20mm entry provided for a gland via a special welded insert boss. Corrosion resistant glands are recommended for use with stainless steel light fittings. Single gland entry standard.

Mounting: 8mm threaded nut welded into the rear mounting brackets allows the luminaire to be mounted using either brackets, or pole clamps.

Wire Guard: A stainless steel wire guard is available as an optional extra on the 4ft version only.

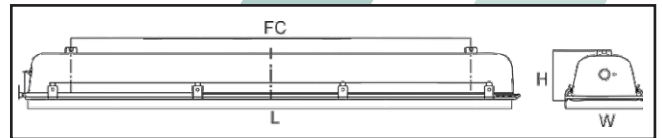
Ambient Temperature Rating: -20°C - +40°C

Ingress Protection Grade: IP65

Photometric Data: Photometric files available on request.

Warranty: Body: 5 year warranty. **Lamp:** 1 year warranty. Only fit for use with Nordland Ex LED tubes.

body has a 5 year warranty and the lamps have a 1 year warranty



| Model Name | N50-LT 1/4ft LED Exn 4ft (1200mm) | N50-LT 2/4ft LED Exn 4ft (1200mm) |
|----------------------------|--|--------------------------------------|
| Rated Wattage(W) | 1x18W T8 LED | 2x18W T8 LED |
| Luminous Flux (system) | 1800lm | 3600lm |
| Luminous Efficacy (system) | 100lm/W | |
| Colour Temperature | 4500K | |
| Colour Rendering Index | >Ra82 | |
| Rated Voltage | 100V-240V AC, 50/60Hz | |
| Ambient Temperature | -20°C to +40°C | |
| Rated Lifetime | 35 000Hr. | |
| Installation | Wall, Ceiling, Bracket and Pole mounting | |
| Ingress Protection Grade | IP65 | |
| Dimensions | L x W x H 1370x219x135mm | |
| Fixing Centres (FC) | 1100mm | |
| Weight | 8.5Kg | |

Nordland reserves the right to change any specification or design without prior notice.

